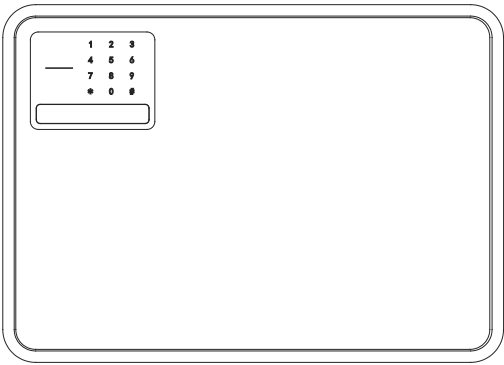


Product Code: _____

Number: _____

User Manual

Password Safe Series



DELI GROUP CO, LTD.
Deli Industrial Zone, Ninghai County,
Ningbo City, Zhejiang Province, China
serviceglobal@nbdeli.com
www.deliworld.com Made in China



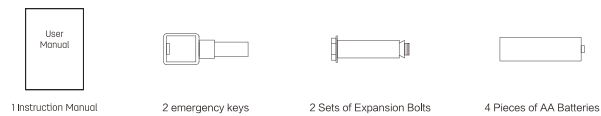
**KEEP FOR
FUTURE USE**
Version: 1.0
Date: 02-2025

Contents

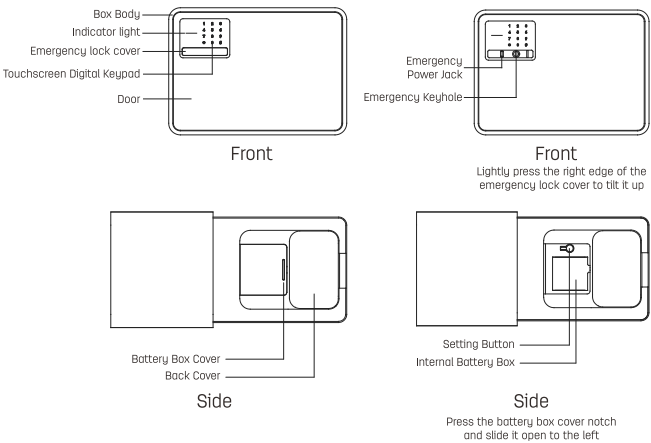
I. Product Unpacking	1
II. Product Diagram	1
III. First Use	2
IV. Password Setting	2
V. Opening And Closing Door Operation	2
VI. Vibration Alarm Setting	3
VII. Emergency Opening	3
VIII. Alarm Function	3
IX. Installation Instructions	4
X. Usage Precautions	5
XI. Common Faults and Troubleshooting Methods	5
XII. After-sales Service	6

Welcome to use our series of safes, cabinets, and storage boxes. Please read this instruction manual carefully before use and operate according to the instructions.

I. Product Unpacking



II. Product Diagram



III. First Us

1. After placing the case, press the right edge of the emergency lock cover to make it warp, insert the emergency key into the lock hole and turn the key counterclockwise to open the case door, then press the notch of the battery box cover and slide it open to the left, and install the 4 pieces of AA batteries into the case to connect the battery box.
2. For ease of use, please store the manual and key in a safe place, not inside the box

IV. Password Setting

1. Factory password is 12345678
2. Open the door, remove the battery box cover, press the [Setting Button], the indicator light flashes green, enter the 3-8 bit password, and then press the [#] to confirm, the buzzer beeps a long time 'beep' again to enter the password, press the [#] to confirm, the indicator light is green and accompanied by a 'beep', indicating that the password is set successfully. 'Press [#] to confirm, the indicator light will be green and accompanied by a long beep, indicating that the password is set successfully. If the two passwords are not the same, the buzzer will sound three times, indicating that the password failed to set, you need to re-enter the password.
3. When the password is entered incorrectly, it can be deleted and re-entered by pressing the [*] key.

V. Opening And Closing Door Operation

1. Open the door: touch the key area to wake up the panel, first press [#], and then enter the password, press [#] to confirm, unlock the music, while the indicator light green, the door automatically pop open. If you hear 'beep, beep, beep' short sound, while the indicator light red, that the password is wrong, need to re-enter the correct password.

- 2 -

2. Dummy password to open the door: In the process of entering the password, you can enter any password, as long as the password contains the password you set, you can verify the pass, the dummy password can enter a total of 14 digits.
3. Close the door operation: the box door will be pushed closed in place, you can lock the door.

VI. Vibration Alarm Setting

Vibration alarm: touch the key area to wake up the electronic panel, press the [*] once to turn on the vibration alarm, the vibration alarm is automatically turned off after the password is unlocked.

VII. Emergency Opening

1. When the battery inside the box is exhausted and can not operate, please use external power supply. Insert the plug of Type-c data cable into the corresponding jack and enter the correct password to open the door. Open the door in the same way as the first time.
2. When the electronic system fails or the password is forgotten, please use the emergency key to open the door. Open the door in the same way as the first time

VIII. Alarm Function

1. Low Battery Alarm
 - ① After opening the door with password, if the battery voltage is low, the buzzer will give out 6 times of 'beep' and the indicator light will flash 6 times, the user should replace the battery as soon as possible.
 - ② If the battery runs out, the system will stop working and you can open the door with external power supply or emergency key.

- 3 -

2. Password error alarm

The maximum number of password authentication errors is five. After three errors, the indicator is on red and the buzzer beeps for 20 seconds. If five errors occur, the buzzer beeps for 20 seconds and is locked for 3 minutes, during which you cannot operate the electronic panel.

3. Vibration alarm

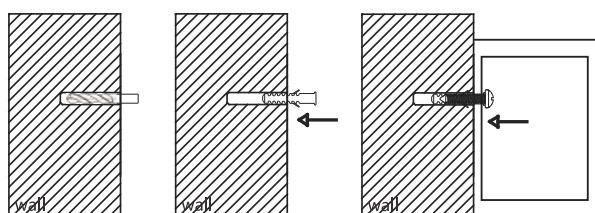
- ① After the vibration alarm is turned on, the prying or shaking box will produce a vibration alarm, the indicator light will be long and bright red, and the buzzer will emit a short sound of "beep" for 20 seconds.
- ② When the system is alarmed but not locked, enter the correct fingerprint or password in time to release the alarm.

4. Release the alarm

When the system plays an alarm tone but does not lock, enter the correct password in time to release the alarm.

IX. Installation Instructions

Always fix the cabinet to a solid concrete wall for safe keeping.



Drill Hole

Place the expansion tube into the hole

Screw the screws with the case into the expansion tube

- 4 -

X. Usage Precautions

1. The battery should be taken out to prevent the leakage of liquid from damaging the electronic system if the product is left unused for a long time.
2. For safety reasons, please be sure to fix the cabinet on a solid concrete
3. Do not store too much cash and valuables when unattended or without a remote alarm device.

XI. Common Faults and Troubleshooting Methods

Fault Phenomenon	Fault Cause	Method of exclusion
Pressing the numeric keys to enter the password does not respond	The battery is dead	Open the door with an external power supply or key to replace the battery
	Battery polarity reversed	Insert the batteries in the correct way
	Fault PCB	Please contact the maintenance department
The emergency key cannot be inserted in or removed	Foreign matters in the keyhole	Remove foreign matters from the keyhole
	The key does not turn to the limit position	Please reinsert in the correct way
Electronic combination lock has been opened, the door can not be opened	Faulty electronic panel or jammed door mechanism	Please contact the maintenance department
The alarm does not sound	The battery is dead	Replace the battery
	Battery polarity reversed	Insert the batteries in the correct way

- 5 -

XII. After-sales Service

Dear user,

Thank you for purchasing our company's product. To ensure your satisfaction and benefits, if your product malfunctions due to quality issues, you can contact your local dealer or authorized service center with your warranty card.

Warranty Instructions:

1. Our company provides free warranty services, including repairs and parts replacement, for any malfunction that occurs under normal use within one year from the date of purchase;

2. This warranty card and the purchase invoice are the proof of our after-sales service to customers. This card must be filled out with the required information in detail and stamped by the dealer to be valid.

3. In the following circumstances, free warranty service is not applicable, and paid repairs will be required:

- ① The product is beyond the warranty period.
- ② The product is damaged due to improper use, maintenance, or storage that does not comply with the product's user manual.
- ③ The product malfunction or damage is caused by force majeure.
- ④ Wearable parts and accompanying accessories.
- ⑤ The product is damaged due to excessive twisting or improper use.

This warranty card is issued together with the product, with one card for each product. To ensure that you can fully enjoy the rights to our free warranty service, please keep this card properly. No replacement will be provided for lost cards.

Purchase Date: _____ (Year) _____ (Month) _____ (Day)

PRODUCT WARRANTY CARD

Product Information	Product Name		Serial Number		
	Product Model		Manufacturing Date		
Customer Information	Company Name			Contact Person	
	Address			Contact Number	
Sales Information	Distributor Name			Contact Person	
	Address			Contact Number	
	Sales Date			Invoice Number	
Repair Record	Fault Condition	Repair Result	Customer Signature	Technician Signature	Date

deli DELI GROUP CO., LTD.

Cut this copy along the dotted line and keep it in the custody of the dealer ✂

Product Information	Product Name		Serial Number		
	Product Model		Manufacturing Date		
Customer Information	Company Name			Contact Person	
	Address			Contact Number	
Sales Information	Distributor Name			Contact Person	
	Address			Contact Number	
	Sales Date			Invoice Number	
Repair Record	Fault Condition	Repair Result	Customer Signature	Technician Signature	Date